

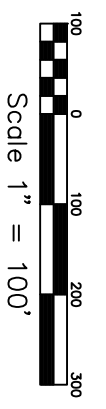
VICINITY MAP

WITVIN SANITATION DISTRICT

Paradise Cove Subdivision  
Tx.Mp. 58, P.661  
LR

SEE SHEET 1

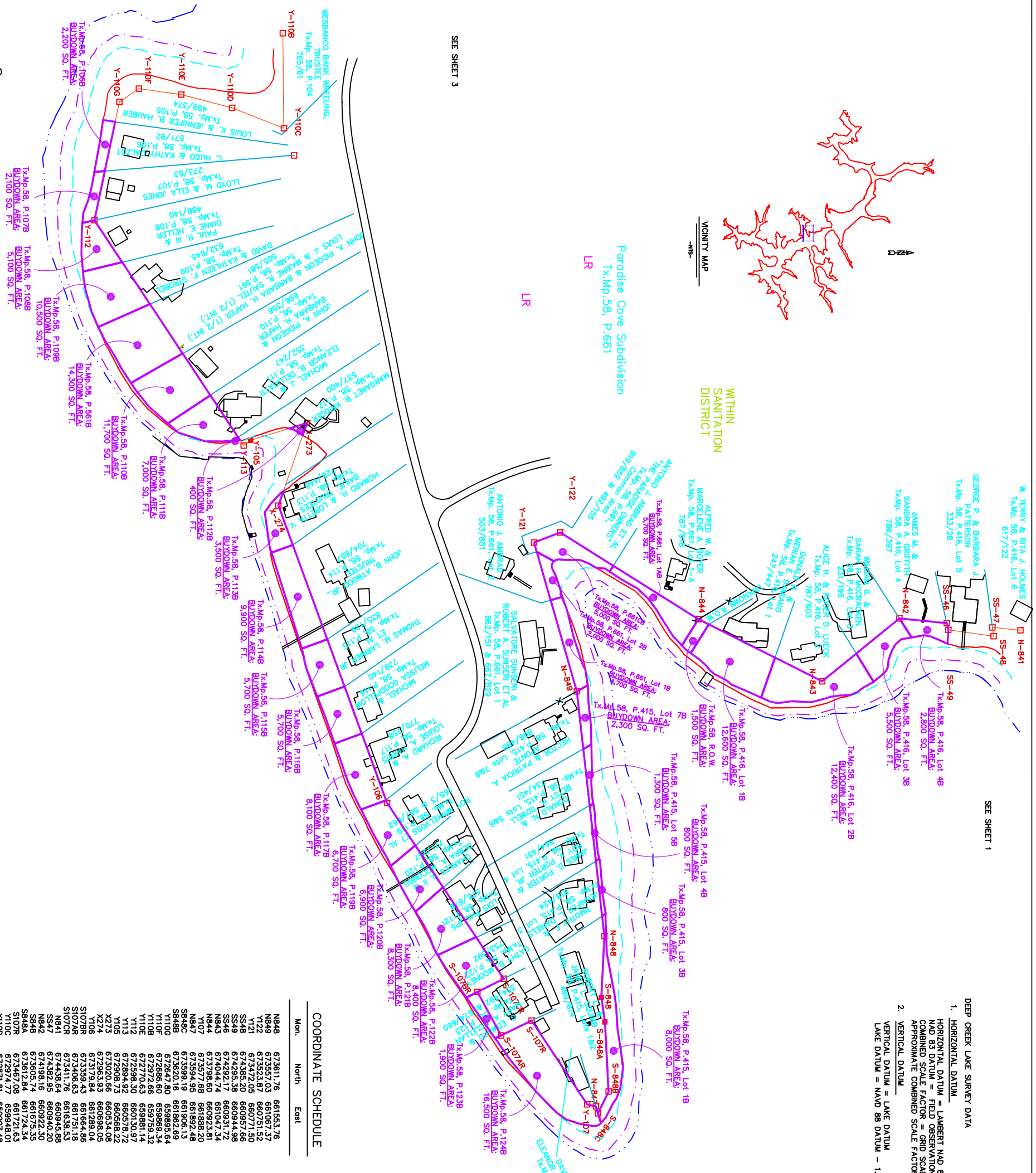
- DEEP CREEK LAKE SURVEY DATA
- HORIZONTAL DATUM
  - HORIZONTAL DATUM = LAMBERT NAD 83 DATUM
  - NAD 83 DATUM = FIELD OBSERVATION X COMBINED SCALE FACTOR
  - COMBINED SCALE FACTOR AND SCALE ELEVATION SCALE FACTOR
  - APPROXIMATE COMBINED SCALE FACTOR = 0.99989
  - VERTICAL DATUM
  - VERTICAL DATUM = LAKE DATUM
  - LAKE DATUM = NAD 88 DATUM - 1.80 FT.



- LEGEND
- CONCRETE MONUMENT SET
  - CONCRETE MONUMENT FOUND
  - MONUMENT LINE
  - 2466 CONTOUR LINE
  - 2462 CONTOUR LINE
  - 25 FT. SAFETY LINE
  - BLVDOWN AREAS
  - BLVDOWN AREAS
  - TOWN CENTER
  - TR = TOWN RESIDENTIAL
  - MONUMENT TO BE SET
  - CANNOT BE SET
  - 1" REBAR WITH ALUMINUM CAP SET
  - 2" BRASS DISC SET

CONTOURS ARE AT 2 FT. INTERVALS REFERENCED TO THE STAFF GAUGE AT THE PENSTOCK.

SEE SHEET 3



COORDINATE SCHEDULE

| Mon.   | North     | East      |
|--------|-----------|-----------|
| N849   | 673811.76 | 661533.76 |
| N849   | 673597.03 | 661061.37 |
| N849   | 673427.85 | 660721.56 |
| N849   | 673436.20 | 660944.88 |
| N849   | 674295.39 | 660944.88 |
| N849   | 674292.17 | 660931.72 |
| N844   | 674044.74 | 661047.34 |
| N844   | 673798.60 | 660923.81 |
| N847   | 673577.68 | 661888.20 |
| N847   | 673594.95 | 661892.48 |
| N846   | 673594.19 | 661908.13 |
| N846   | 672647.80 | 659985.64 |
| N1106  | 672668.60 | 659989.34 |
| N1106  | 672770.66 | 659759.32 |
| N1106  | 672772.63 | 659881.14 |
| N1106  | 672998.30 | 660130.97 |
| N1105  | 672894.92 | 660578.72 |
| N1105  | 673020.66 | 660534.08 |
| N1105  | 672853.93 | 660368.03 |
| N1105  | 672859.44 | 660368.03 |
| N1105  | 673135.94 | 661654.86 |
| N1105  | 673406.63 | 661751.18 |
| N1078R | 673411.76 | 661638.53 |
| N1078R | 674438.64 | 660945.88 |
| N841   | 674382.95 | 660940.20 |
| N847   | 674198.16 | 660922.30 |
| N848   | 673605.74 | 661675.35 |
| N848   | 673612.64 | 661724.34 |
| N1078R | 672917.09 | 661724.33 |
| N1100  | 672871.81 | 659907.48 |

SURVEY CALLS

| CONC.MON.     | BEARING    | DISTANCE |
|---------------|------------|----------|
| Y110A-Y110B   | N 70°01' E | 126.84'  |
| Y110B-Y110C   | N 89°22' E | 186.70'  |
| Y110C-Y110D   | S 21°29' W | 110.65'  |
| Y110D-Y110E   | S 14°36' W | 104.95'  |
| Y110E-Y110F   | S 07°59' W | 84.84'   |
| Y110F-Y110G   | S 34°07' E | 46.88'   |
| Y110G-Y110H   | S 78°07' E | 240.48'  |
| Y110H-Y110I   | S 58°29' E | 537.09'  |
| Y110I-Y110J   | N 37°15' W | 17.35'   |
| Y105-X273     | N 16°58' W | 117.02'  |
| X273-X274     | S 70°55' E | 173.80'  |
| Y106-S107CR   | N 69°56' E | 629.20'  |
| S107CR-S107BR | S 28°42' E | 419.44'  |
| S107BR-S107AR | N 61°20' E | 98.38'   |
| S107AR-S107R  | N 26°03' E | 199.94'  |
| S107R-S107    | N 13°56' E | 17.80'   |
| Y107-N847     | N 72°43' E | 14.29'   |
| N847-S848C    | S 64°15' W | 48.24'   |
| S848C-S848B   | S 86°58' W | 136.54'  |
| S848B-S848A   | N 87°45' W | 49.51'   |
| S848A-S848    | N 86°58' W | 121.74'  |
| N848-N849     | S 83°35' W | 489.46'  |
| N849-N841     | S 73°58' W | 307.83'  |
| Y121-Y122     | N 21°05' W | 55.54'   |
| Y122-N844     | N 28°39' E | 324.29'  |
| N844-N843     | N 26°39' E | 324.29'  |
| N843-N842     | N 24°54' E | 273.39'  |
| N842-S846     | N 39°11' W | 197.91'  |
| S846-S849     | N 05°43' E | 94.48'   |
| S849-S848     | N 76°22' E | 13.64'   |
| S848-S847     | S 82°40' W | 90.71'   |
| S847-N841     | N 05°49' E | 17.60'   |
| N841-N840     | N 40°47' E | 277.75'  |

PENELEC CALLS

| CONC.MON.NO. | BEARING     | DISTANCE   |
|--------------|-------------|------------|
| Y-110A       | N 68° 41' E | 126.90 FT. |
| Y-110B       | N 89° 28' E | 202.00 FT. |
| Y-110C       | S 22° 28' W | 110.70 FT. |
| Y-110D       | S 19° 04' W | 104.50 FT. |
| Y-110E       | S 06° 01' W | 85.80 FT.  |
| Y-110F       | S 35° 11' W | 46.50 FT.  |
| Y-110G       | S 79° 15' E | 240.50 FT. |
| Y-110H       | N 68° 35' E | 687.50 FT. |
| Y-110I       | N 36° 29' W | 17.60 FT.  |
| Y-105        | N 17° 59' W | 117.50 FT. |
| X-273        | S 71° 52' E | 173.80 FT. |
| X-274        | N 69° 53' E | 603.80 FT. |
| S-107BR      | S 30° 09' E | 458.93 FT. |
| S-107AR      | N 57° 55' E | 98.55 FT.  |
| S-107R       | N 29° 28' W | 67.22 FT.  |
| Y-107        | N 53° 21' E | 18.00 FT.  |
| N-847        | N 71° 08' E | 14.45 FT.  |
| S-848C       | N 65° 00' W | 48.20 FT.  |
| S-848B       | S 86° 32' W | 138.80 FT. |
| S-848A       | S 81° 20' E | 129.80 FT. |
| N-849        | S 81° 10' W | 121.74 FT. |
| N-848        | S 81° 10' W | 483.00 FT. |
| N-849        | S 72° 37' W | 309.60 FT. |
| Y-121        | N 21° 48' W | 53.90 FT.  |
| N-844        | N 29° 56' E | 322.00 FT. |
| N-843        | N 24° 54' E | 275.70 FT. |
| N-842        | N 39° 31' W | 196.10 FT. |
| S-846        | N 03° 50' E | 95.00 FT.  |
| S-849        | N 06° 28' E | 90.73 FT.  |
| S-848        | S 80° 22' W | 17.57 FT.  |
| S-847        | N 05° 50' E | 55.00 FT.  |
| N-841        | N 39° 47' E | 279.10 FT. |